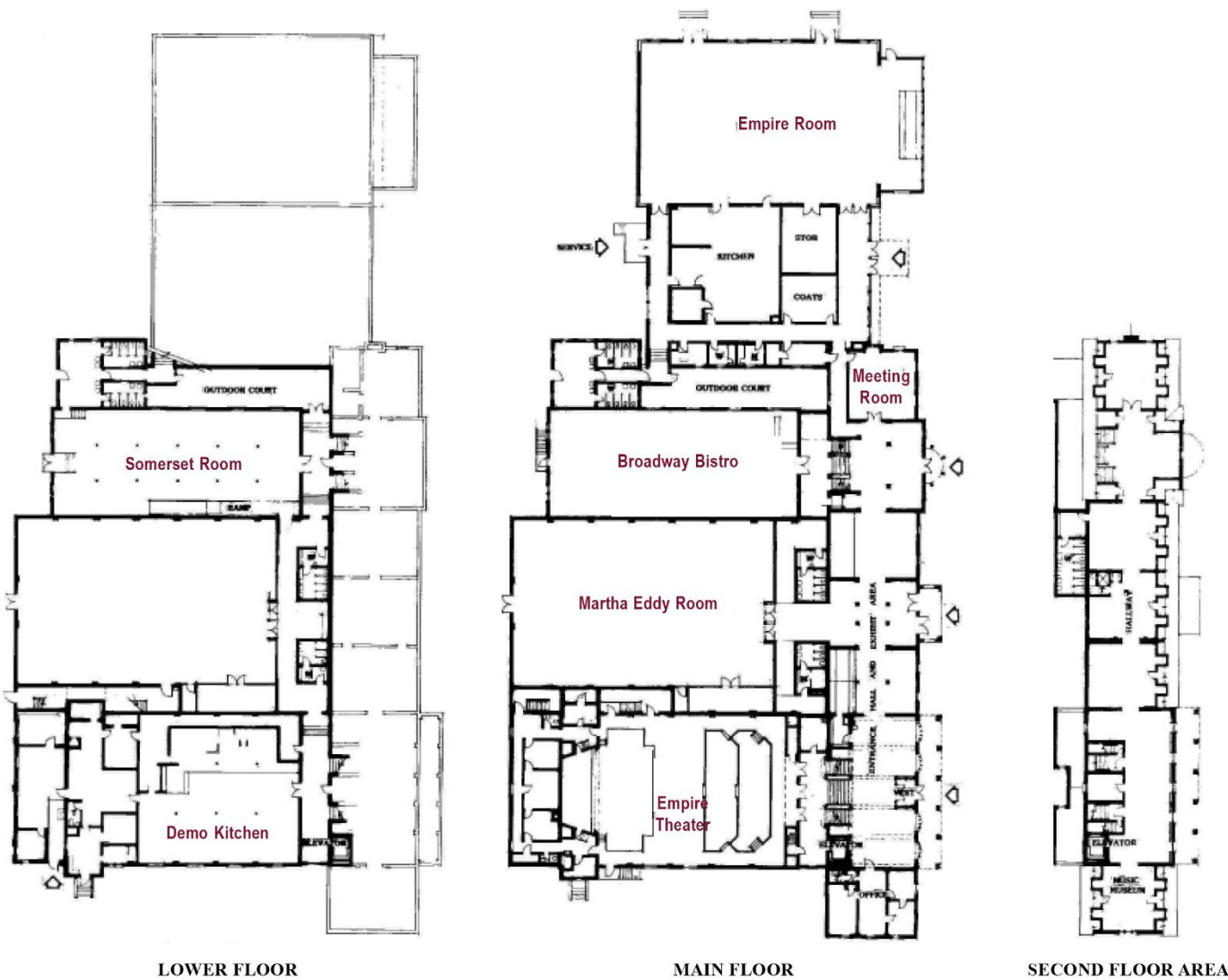


# The Art & Home Center



**Empire Room**

- Up to 400 guests Theater-style
- Up to 300 guests Meeting/Classroom-style
- 6,112 square feet

**Somerset Room**

- Up to 175 guests Theater-style
- Up to 85 guests Meeting/Classroom-style
- 2,400 square feet (30' x 80')

**Entire Facility**

- 20,258 square feet  
*(does not include the Empire Room, Somerset Room and Empire Theater)*

**Martha Eddy**

- Up to 400 guests Theater-style
- Up to 225 guests Meeting/Classroom-style
- 5,265 square feet (58.5' x 90')

**Empire Theater**

- Up to 250 guests Theater-style
- Up to 180 guests Meeting/Classroom-style
- Stage Area – 682 square feet (22' x 31')
- Seating Area – 2,491 square feet (53' x 47')

**Demonstration Kitchen**

- Up to 200 guests Theater-style
- Up to 100 guests Meeting/Classroom-style
- Seating Area – 2,491 square feet (53' x 47')
- Demo Area – 900 square feet (18' x 50')

**Broadway Bistro**

- Up to 225 guests Theater-style
- Up to 130 guests Meeting/Classroom-style
- 3,420 square feet (38' x 90')

**Second Floor Hallway Area**

- 3,594 square feet with elevator access

**Main Floor Hallway Area**

- 4,048 square feet with three entrances

**Meeting Room**

- Up to 50 guests Theater-style
- Up to 25 guests Meeting/Classroom-style
- 540 square feet (24' x 22.5')