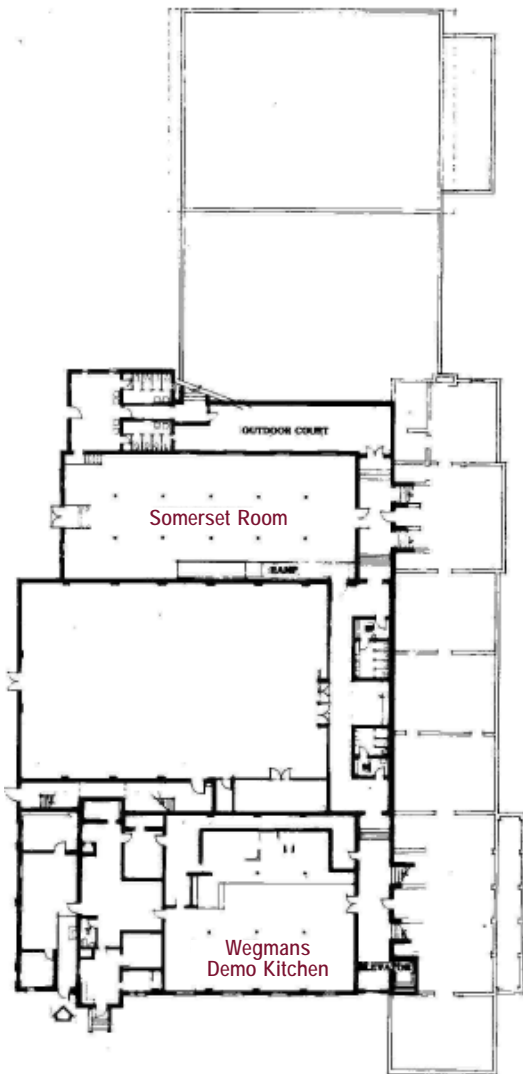
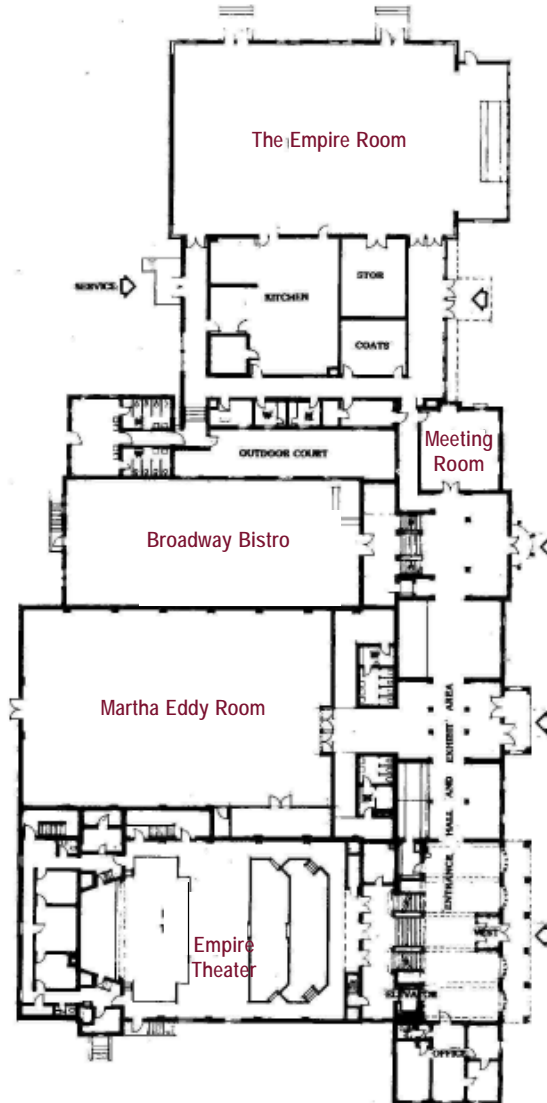


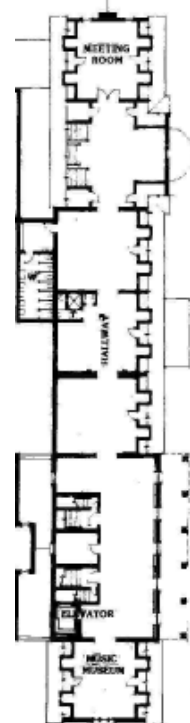
# The Art & Home Center



LOWER FLOOR



MAIN FLOOR



SECOND FLOOR AREA

## Somerset Room

- Up to 175 guests Theater-style
- Up to 85 guests Meeting/Classroom-style
- 1,770 square feet – 30' x 59'

## Broadway Bistro

- Up to 225 guests Theater-style
- Up to 130 guests Meeting/Classroom-style
- 3,420 square feet – 38' x 90'

## Art & Home Center Meeting Room

- Up to 50 guests Theater-style
- Up to 25 guests Meeting/Classroom-style
- 540 square feet – 24' x 22.5'

## Wegmans Demonstration Kitchen

- Up to 200 guests Theater-style
- Up to 100 guests Meeting/Classroom-style
- Seating area: 1,740 square feet – 29.5' x 59'
- Demo area: 416 square feet – 16' x 26'

## Martha Eddy Room

- Up to 350 guests Theater-style
- Up to 225 guests Meeting/Classroom-style
- 5,265 square feet – 58.5' x 90'

## Second Floor Hallway Area

- 3,660 square feet
- Elevator access

## Main Floor Hallway Area

- 3,520 square feet
- Three entrances

## Empire Theater

- Up to 250 guests Theater-style
- Up to 180 guests Meeting/Classroom-style
- Stage area: 682 square feet – 22' x 31'
- Seating area (3 tiers): 2,491 sq. ft. – 53' x 47'

## Entire Facility

- Up to 1,250 guests Theater-style
- Up to 745 guests Meeting/Classroom-style
- 19,984 square feet